

FILTROS

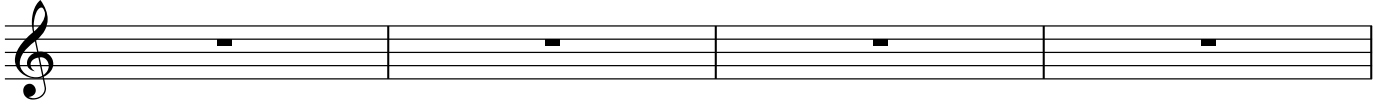
Sebastián Lans

INTRO N.C.

∕ ∕ ∕ ∕



6 G Bb/F Fm⁶ G F7(sus4) Dm/F



10 G Bb/F Fm⁶ G Bb/C



A

14 G Bb/F Fm⁶ G F7(sus4) Dm/F Dm/F



18 G Bb/F Fm⁶ G Bb⁶ Ab⁶



22 G Bb/F Fm⁶ G F7(sus4) Dm/F

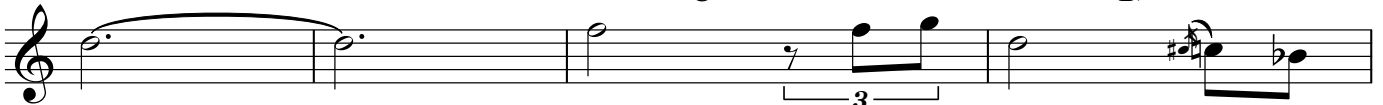


Dm/F G Bb/F Fm⁶ G A7(sus4)



B

30 Ebmaj7 Ebmaj7(#5) C7(sus4) Bb7(sus4)

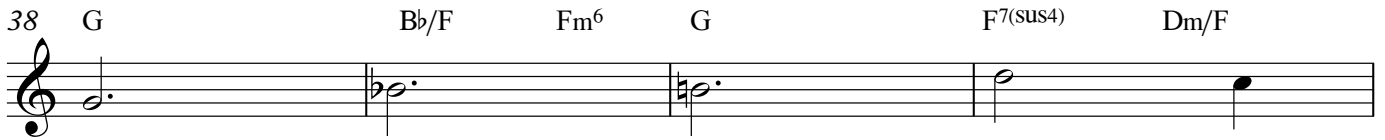


34 Ebmaj7 Ebmaj7(#5) C7(sus4) F7(sus4)



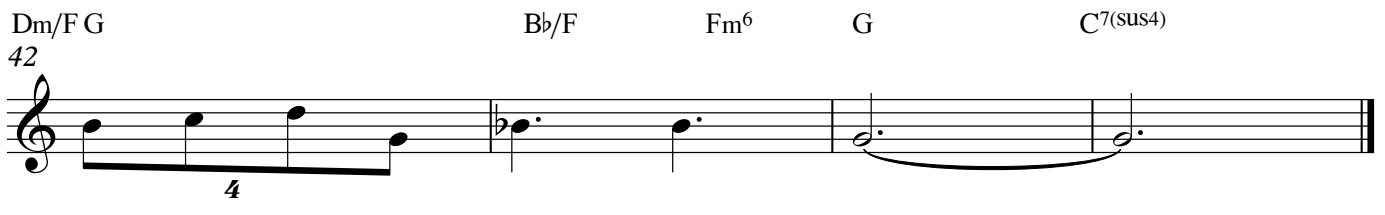
2

38 G Bb/F Fm⁶ G F⁷(sus4) Dm/F



Dm/F G Bb/F Fm⁶ G C⁷(sus4)

42



RealBookArgentina